

Killer Quarter Has Hedge Funds down 2%

Philippe Ferreira
Senior Strategist
philippe.ferreira@lyxor.com

Anne Mauny
Research Analyst
anne.mauny@lyxor.com

Jean-Baptiste Berthon
Senior Strategist
jean-baptiste.berthon@lyxor.com

Lionel Melin
Strategist
lionel.melin@lyxor.com

Jeanne Asseraf-Bitton
Global Head of Cross
Asset Research
jeanne.asseraf-bitton@lyxor.com

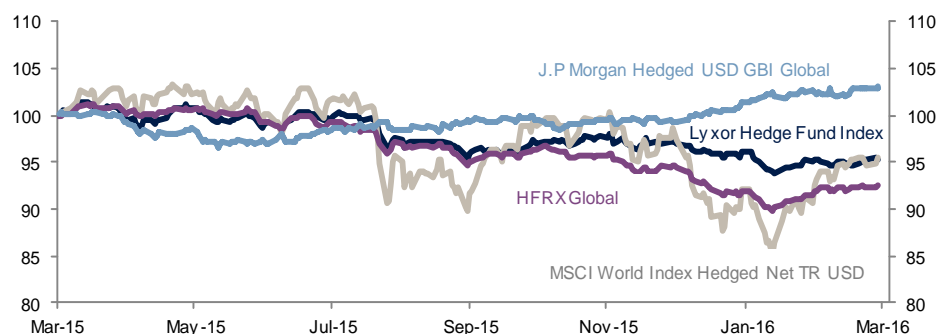
During the first quarter of 2016, hedge funds suffered a 2% drawdown according to the Lyxor Hedge Fund index. Across hedge fund strategies, CTAs and Merger Arbitrage have been the only segments of the industry being able to post returns in positive territory in Q1. Meanwhile, L/S Equity underperformed as a result of the tough market conditions and the sharp rotation in risk factors which saw a strong but short lived rebound in value stocks.

In this environment, the hedge fund industry has been criticized for delivering disappointing returns. However, the performance of hedge funds must be evaluated in relative terms (see chart). The turbulent market conditions over the last twelve months saw the MSCI World down almost 5%, with the Stoxx Europe 600 and the Topix 100 down by 12% (in TR and local currency). Government bonds continued to edge higher, but valuations are so stretched that it seems ill advised to dig further into the asset class at present. Hedge funds are down by 5% over the last twelve months according to our measure, but the volatility of their returns is divided by three compared to equities. The annualized volatility of the Lyxor Hedge Fund index is 5% over the last twelve months, compared to 15% for the MSCI World. As a result, on a risk adjusted basis, hedge funds have fared much better than risk assets both in Q1 and over the last twelve months.

With regards to the most recent period, March saw a revival of L/S Credit strategies (which we upgraded early March). Merger Arbitrage also delivered healthy returns in March after showing strong resilience in January and February. We recently reaffirmed our overweight stance on Merger Arbitrage. Meanwhile, CTAs are down in March to the extent that their defensive positioning (long fixed income, neutral equities, short energy and long JPYUSD) suffered during the market rebound. But dovish central bankers provided a floor to their long fixed income positions and limited the losses of the strategy. We remain neutral on CTAs for the time being.

Hedge Funds Outperformed Risk Assets Both in Q1-16 and During the Last 12 Months

Rebased at 100 at 31/03/2015



As of 29/03/2016. Source: Bloomberg, Lyxor AM

THE WEEK IN 3 CHARTS

Hedge Fund Snapshot: Hedge Funds up 0.6% in March, led by Event Driven, L/S Equity and FI Arb.

	WTD*	MTD	YTD
Lyxor Hedge Fund Index	0.2%	0.6%	-1.9%
CTA Broad Index	-0.1%	-3.3%	1.1%
Event Driven Broad Index	0.7%	1.4%	-1.7%
Fixed Income Broad Index	0.0%	1.6%	-0.7%
L/S Equity Broad Index	0.4%	1.1%	-3.0%
Global Macro Index	-0.4%	0.5%	-2.1%
S&P 500	0.3%	7.0%	-1.1%
10 Y US Treasury (Change in bps)	-14	8	-50

*From 22 March to March 29, 2016

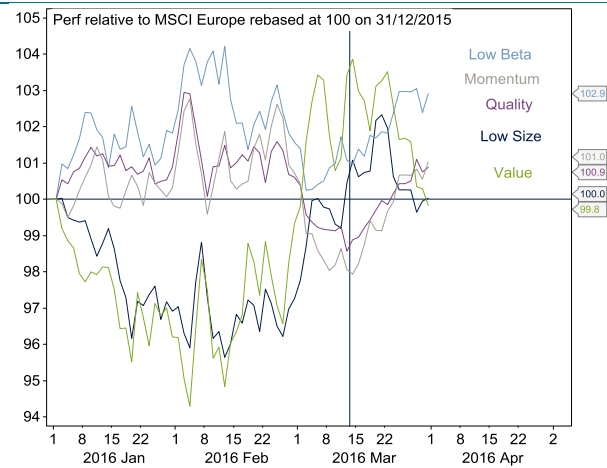
During the last week of March, hedge funds delivered flat returns. During this period, the market rally came to a halt with the MSCI world down 0.5% and the S&P GSCI down 4%. Fixed income and credit continued to rally however. In the hedge fund space, Event-Driven and L/S Equity outperformed.

For the full month of March, hedge funds are up 0.6%, with Fixed Income Arb. and Event Driven outperforming. The former was supported by dovish central banks and the later by the improving risk appetite.

Year to date, the picture is nonetheless quite different, with CTAs leading the way as a result of their solid returns during the risk off market phase at the beginning of the year.

European smart beta focus: Low beta regains colours, the rally in value stocks vanishes

Defensive factors regain colours, supporting L/S Market Neutral



Each index is a basket of 40 stocks (equally weighted) out of a 440 stock universe (MSCI Europe). Source: JP Morgan, Lyxor AM

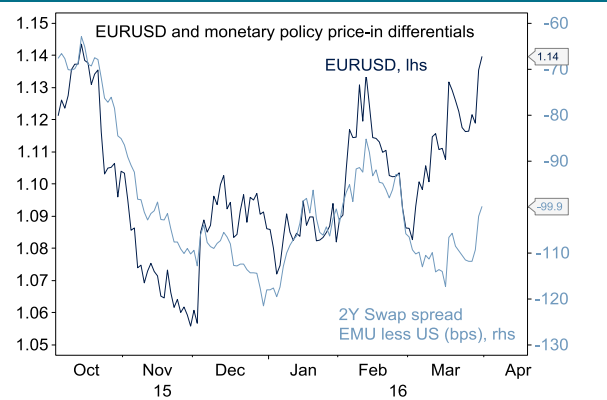
The equity market rebound in Europe, since mid-February, saw a significant outperformance of value and low size companies and a sharp underperformance of quality, low beta and momentum stocks.

This pattern hurt an important number of European L/S Equity Market Neutral funds which used to be long momentum and short value.

This has reversed since mid-March, providing a respite for European L/S Equity Market Neutral funds. Some funds in our sample are up 2% in March.

Yellen's dovish comments fuel EURUSD, a negative for long USD Macro funds

EURUSD appreciation hurts CTAs and Global Macro



Source: Macrobond, Lyxor AM.

The second half of March saw the Fed not hiking rates at the 15/16 March FOMC meeting. Then, some hawkish members of the Fed reversed the tone in the following days. Finally, Yellen reiterated her dovish stance at the end of March.

Despite the confusion over the US monetary policy stance, the EURUSD appreciated markedly in March. This contributed negatively to the performance of several CTA and Global Macro funds, which were short EUR vs USD.

However, at current levels (1.14 as of April 1st), we believe the EURUSD is rather exposed to downside risks, which will support such hedge fund strategies.

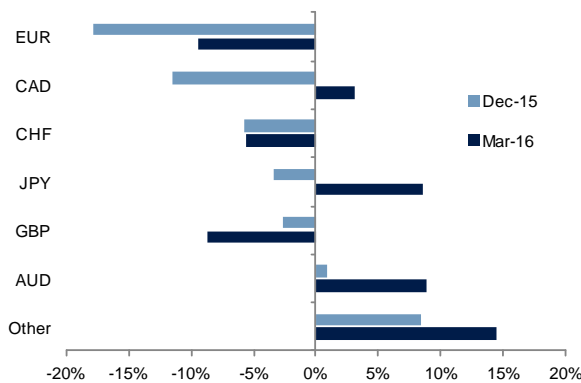
CTAs

	WTD*	MTD	YTD
CTA Broad Index	-0.1%	-3.3%	1.1%
CTA Long Term	-0.1%	-3.5%	1.2%
CTA Short Term	0.0%	-0.2%	-2.3%

*From 22 March to March 29, 2016

Short positions on GBP vs USD contributed to losses

Net Exposure to FX vs USD, % NAV



As of 22/03/2016. Equally weighted. Source: Bloomberg, Lyxor AM

CTAs Give Up Some Gains in March

CTAs regained colors towards the end of March, after a difficult month which saw a sharp reversal from risk off to risk on. CTAs have been defensively positioned but overall they managed to limit losses thanks to long fixed income exposures and dovish central banks.

Last week, the positive contribution to performance came from the long positions on fixed income: German and US longer maturities were the most rewarding as a result of the dovish central banks. This trade continues to represent a large allocation within portfolios.

In the FX space, funds suffered mainly from the appreciation of GBPUSD, being mainly short exposed to the currency. The continued EURUSD appreciation has not been supportive as well.

The commodity cluster had mixed impact on funds' results. Long exposures to energy and metals were painful. In the equity bucket, long, though limited, risk allocation turned detrimental due to the sell-off in Asian and European stock markets.

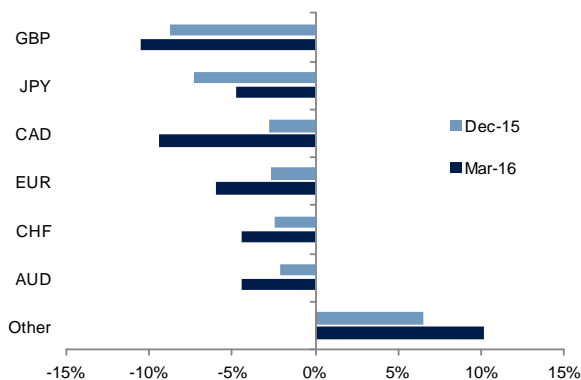
GLOBAL MACRO

	WTD*	MTD	YTD
Global Macro Index	-0.4%	0.5%	-2.1%

*From 22 March to March 29, 2016

Long EM currencies vs USD proved detrimental at the end of March

Net Exposure to FX vs USD, % NAV



As of 22/03/2016. Equally weighted. Source: Bloomberg, Lyxor AM

Losses from FX as USD falls

The Global Macro strategy ended the month up 0.5% as renewed risk appetite lifted some strategies more focused on risk assets. Meanwhile, fixed income specialists were supported by the dovish stance of both the ECB and the Fed.

During the week under review, Macro managers were slightly down, driven by losses in the FX space. Long exposure to some EM currencies against USD turned detrimental during the period under review. Managers also suffered from the erratic moves of the GBP, as the referendum on Brexit gets closer. In addition, the equity cluster was a detractor to long exposed funds, in particular due to the sell-off in European stock markets.

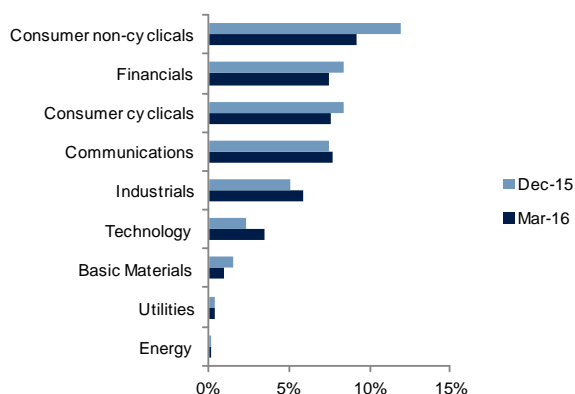
Despite heterogeneous positioning on US and European bonds, the fixed income bucket made an overall modest contribution. Moreover, small risk allocations to commodities added meager gains to some short exposed managers.

L/S EQUITY

	WTD*	MTD	YTD
L/S Equity Broad Index	0.4%	1.1%	-3.0%
Long Bias	0.3%	2.4%	-1.9%
Market Neutral	0.5%	1.6%	-1.8%
Variable Bias	0.4%	0.0%	-4.2%

*From 22 March to March 29, 2016

L/S Equity Funds benefited from their low exposure to Energy Net Exposure to Sectors, % NAV



As of 22/03/2016. Equally weighted. Source: Lyxor AM

EVENT DRIVEN

	WTD*	MTD	YTD
Event Driven Broad Index	0.7%	1.4%	-1.7%
Merger Arbitrage	0.8%	1.6%	0.5%
Special Situations	0.4%	1.1%	-5.7%

*From 22 March to March 29, 2016

Pepco vs Exelon deal was rewarding for M&A Funds Pepco vs Exelon deal spread, USD



As of 29/03/2016. Equally weighted. Source: Bloomberg.

Up across all regions

In the US, positive equity indices and a drop in the VIX Index helped our US focused managers to outperform. The best performance came from the most directional managers who benefited not only from their market exposure, but also from a bias towards sectors that rallied the most.

European indices were negative across the board with the MSCI Europe Index falling 1.1%. However, most of our European focused funds proved resilient and posted profits last week. The variable biased funds outperformed thanks to fundamental stock selection.

Similar to European markets, and with the exception of Japan, Asian markets sold off modestly last week. The best performing managed account was our Japan specialist who was positioned well to take advantage of the market rally as well as having some key longs and shorts which further boosted returns. The diversified multi-PM and quantitatively driven Asian managers also posted small profits with their balanced portfolio exposure and tilted towards fundamental factors generating the gains.

Gains from various sectors

Event driven ended both the week and the month in positive territory, with Merger Arbitrage funds outperforming their Special Situations peers.

Gains were led by investments in various sectors including consumer cyclical, consumer non cyclical, communications and basic materials. Among the prominent gainers were Office Depot, Premier foods and Yahoo. Premier Foods stocks soared more than 80% after the company revealed that it had received multiple takeover approaches. Yahoo trended up amidst fight over the company's control, the start of the sales process and a potential interest from Microsoft.

On the M&A front, Office Depot shares surged when the FTC's case against the Office Depot vs. Staples deal drew rebuke from the US Department of Justice. Gains were also attributable to Pepco. After a lengthy pursuit, the Pepco vs. Exelon deal finally received approval from Washington regulators.

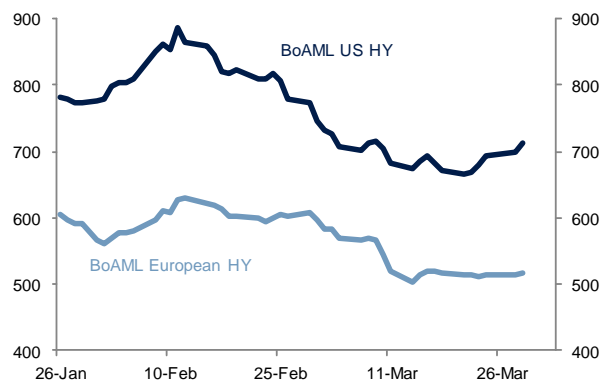
L/S CREDIT ARBITRAGE

	WTD*	MTD	YTD
Fixed Income Broad Index	0.0%	1.6%	-0.7%
L/S Credit Arbitrage	0.1%	0.8%	-0.5%

*From 22 March to March 29, 2016

US High Yield rally lost speed with lower oil prices

Bank of America Merrill Lynch US and European HY Indexes, Spreads



As of 29/03/2016. Source: Bloomberg, Lyxor AM

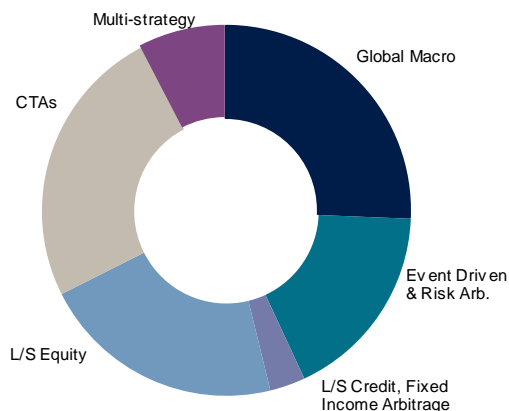
L/S Credit Pauses

After a strong rally in risk assets in March which fuelled the L/S Credit strategy, US credit markets ended the month with a losing week. In Europe, spreads remained broadly flat across IG and HY, while in the US IG outperformed HY which widened by 45bps in sympathy with the fall in oil prices.

On the Lyxor platform, Credit Arbitragers navigated last week relatively well. The best performer outperformed its peers, as gains from its convexity bucket enabled it to post a positive performance in a challenging market. Financial and Corporate sub-strategies added to the gains. Asian funds ended last week flattish, as the Asian HY index. The worst performer is a European fund but managed to remain almost flat in a difficult environment.

METHODOLOGY

Breakdown of AUM by strategy



- **62 funds** in the platform

- **USD 7.9 billion** of assets under management (as of February 28, 2016)

- Replicating approximately **USD 241 billion** of AUM

Lyxor Hedge Fund Indices

Based on the complete range of funds available on the Lyxor Managed Account Platform, a universe of funds eligible for inclusion in the indices is defined on a monthly basis taking into account the following elements:

- Investability Threshold

To be included in any index, the managed account must have at least \$3 million of AuM.

- Capacity Constraints

All index components must possess adequate capacity to allow for smooth index replication in the context of a regular increase in investments.

- Index Construction

For each index, the relative weightings of the component funds are computed on an asset-weighted basis as adjusted by the relevant capacity factors.

- Each Lyxor Hedge Fund Index is reviewed and rebalanced on a monthly basis.

- The Index construction methodology has been designed to mitigate well-known measurement biases. Inclusions and exclusions of new Hedge Funds do not impact the historical index track record.

DISCLAIMER

NOTICE TO INVESTORS IN THE EUROPEAN UNION AND SWITZERLAND: This document is of a commercial and not of a regulatory nature. No prospectus has been approved by, or notified to; a local regulator (except in Jersey) and the product may not be distributed by way of an offer, or an invitation to make an offer, of securities to the public.

NOTICE TO UK INVESTORS: The products described within this document are suitable for professional investors only and are not directed at retail clients. This document is issued by Lyxor AM. Lyxor AM is represented in the UK by Lyxor Asset Management UK LLP, which is authorized and regulated by the Financial Conduct Authority in the UK.

NOTICE TO SWISS INVESTORS: The product presented herein has not been and will not be registered with, or approved by, the Swiss Financial Market Supervisory Authority FINMA (FINMA) under the Swiss Federal Act on Collective Investment Schemes (CISA). Therefore, the information presented herein or in the fund's legal documentation does not necessarily comply with the information standards required by FINMA in the case of distribution of collective investment schemes to non-qualified investors, and investors do not benefit from protection under the CISA or supervision by FINMA. The product must not be distributed to non-qualified investors in or from Switzerland, and may be distributed exclusively on a private placement basis to Qualified Investors as defined in article 10 of the CISA and related provisions in the Swiss Federal Ordinance on Collective Investment Schemes (CISO) in strict compliance with applicable Swiss law and regulations. This document is personal and does not constitute an offer to any person. This document must be distributed or otherwise made available in Switzerland on a private placement basis only and exclusively to Qualified Investors, without distribution or marketing to non-qualified investors in or from Switzerland. This document may be used only by those Qualified Investors to whom it has been handed out in connection with the offering described therein, and it may neither be distributed nor made available to other persons without the express consent of Lyxor AM or Société Générale. It may not be used in connection with any other distribution and shall in particular not be copied and/or distributed to non-qualified investors in Switzerland or in any other country. This document, or the information contained therein, does not constitute a prospectus as such term is understood pursuant to article 652a or article 1156 of the Swiss Code of Obligations or a listing prospectus pursuant to the listing rules of the SIX Swiss Exchange or any other exchange or regulated trading facility in Switzerland or a simplified prospectus, a key information for investors document, or a prospectus, as such terms are defined in the CISA.

NOTICE TO U.S. INVESTORS: Any potential investment in any securities or financial instruments described herein may not be suitable for all investors. Any prospective investment will require you to represent that you are an "accredited investor," as defined in Regulation D under the U.S. Securities Act of 1933, as amended, and a "qualified purchaser," as defined in Section 2(a)(51) of the U.S. Investment Company Act of 1940, as amended (the "40 Act"). The securities and financial instruments described herein may not be available in all jurisdictions. Investments in or linked to hedge funds are highly speculative and may be adversely affected by the unregulated nature of hedge funds and the use of trading strategies and techniques that are typically prohibited for funds registered under the '40 Act. Also, hedge funds are typically less transparent in terms of information and pricing and have much higher fees than registered funds. Investors in hedge funds may not be afforded the same protections as investors in funds registered under the '40 Act including limitations on fees, controls over investment policies and reporting requirements.

NOTICE TO CANADIAN INVESTORS: Any potential investment in any securities or financial instruments described herein may not be suitable for all investors. Any prospective investment will require you to represent that you are a "permitted client", as defined in National Instrument 31-103 and an "accredited investor," as defined in National Instrument 45-106. The securities and financial instruments described herein may not be available in all jurisdictions of Canada. Investment vehicles described herein will not be offered by prospectus in Canada and will not be subject to National Instrument 81-102 and National Instrument 81-106. In addition, investments in or linked to hedge funds are highly speculative and may be adversely affected by the unregulated nature of hedge funds and the use of trading strategies and techniques that are typically prohibited for prospectus offered funds. Also, hedge funds are typically less transparent in terms of information and pricing and have much higher fees than prospectus offered funds. Investors in hedge funds may not be afforded the same protections as investors in offered funds, including limitations on fees, controls over investment policies and reporting requirements.

NOTICE TO HONG KONG INVESTORS: This document is distributed in Hong Kong by SG Securities (HK) Limited and Société Générale Hong Kong Branch, which is regulated by the Securities and Futures Commission and Hong Kong Monetary Authority respectively. The information contained in this document is only directed to recipients who are professional investors as defined under the Securities and Futures Ordinance, Part III.

NOTICE TO JAPANESE INVESTORS: This document is distributed in Japan by Société Générale Securities (North Pacific) Ltd., Tokyo Branch, which is regulated by the Financial Services Agency of Japan. This document is intended only for the Professional Investors as defined by the Financial Instruments and Exchange Law in Japan and only for those people to whom it is sent directly by Société Générale Securities (North Pacific) Ltd., Tokyo Branch, and under no circumstances should it be forwarded to any third party.

NOTICE TO SINGAPORE INVESTORS: This document is distributed in Singapore by Société Générale Singapore Branch, which is regulated by the Monetary Authority of Singapore. This document may only be distributed to institutional, accredited and expert investors.

NOTICE TO TAIWAN INVESTORS: This document is to present you with our all capital markets activities across Asia-Pacific region and may only be distributed to the institutional investors. The product mentioned in this document may not be eligible or available for sale in Taiwan and may not be suitable for all types of investors.