

Europe

Strategy Matters

Portfolio Strategy Research

The value of scarcity – finding ‘affordable’ growth and income

The post-recession world has been marked by very slow economic activity and historically low interest rates. This has left investors with unusually few opportunities to find both growth and income and the scarcity of these two factors has led to rising valuations for those assets that offer them. However, we still see some pockets of opportunities for investors to find less expensive growth and, in particular, income. We highlight a list of growth stocks on which our analysts are positive and our dividend yield and growth basket (GSSTHIDY).

The scarcity of growth

Globally, the post-recession economic recovery has been unusually weak in many cases, even by the standards of previous financial crisis recoveries. This weaker growth, together with high uncertainty as a result of the financial crisis, has also been reflected in the corporate sector. Companies have been hoarding cash rather than spending on future growth. The proportion of companies in Europe generating annual earnings growth of more than 10% has fallen sharply, while the number generating annual sales growth of over 10% is at a multi-year low. This lack of growth has resulted in some high-growth equities, for example in the technology sector, rerating to valuations not seen since the technology bubble of the late 1990s. Very ‘secure’ and stable growth has also attracted record relative valuations in many cases.

The scarcity of income

In a world of close to zero interest rates, and (in real terms) rates of not much more for risk-free assets, the search for yield continues unabated. This appetite has resulted in a scramble for carry and historically low risk premia in fixed income and credit markets. The anomaly is that equity yields remain high, and it is still possible to find ‘affordable’ income in equities. The proportion of companies in Europe with a dividend yield above the corporate credit yield is still close to a record.

Finding ‘affordable’ growth and income

We look for opportunities where growth remains reasonable in terms of valuation and where yield and dividend growth can be found with relatively low risk. We identify a list of companies that screen as high-growth, and on which our analysts have Buy ratings, and we continue to recommend our income and growth basket (GSSTHIDY) relative to the SXXP.

Peter Oppenheimer

+44(20)7552-5782 peter.oppenheimer@gs.com
Goldman Sachs International

Christian Mueller-Glissmann, CFA

+44(20)7774-1714 christian.mueller-glissmann@gs.com
Goldman Sachs International

Anders Nielsen

+44(20)7552-3000 anders.e.nielsen@gs.com
Goldman Sachs International

Sharon Bell, CFA

+44(20)7552-1341 sharon.bell@gs.com
Goldman Sachs International

Matthieu Walterspiler, CFA

+44(20)7552-3403 matthieu.walterspiller@gs.com
Goldman Sachs International

Anna Huang

+44(20)7774-1107 anna.huang@gs.com
Goldman Sachs International

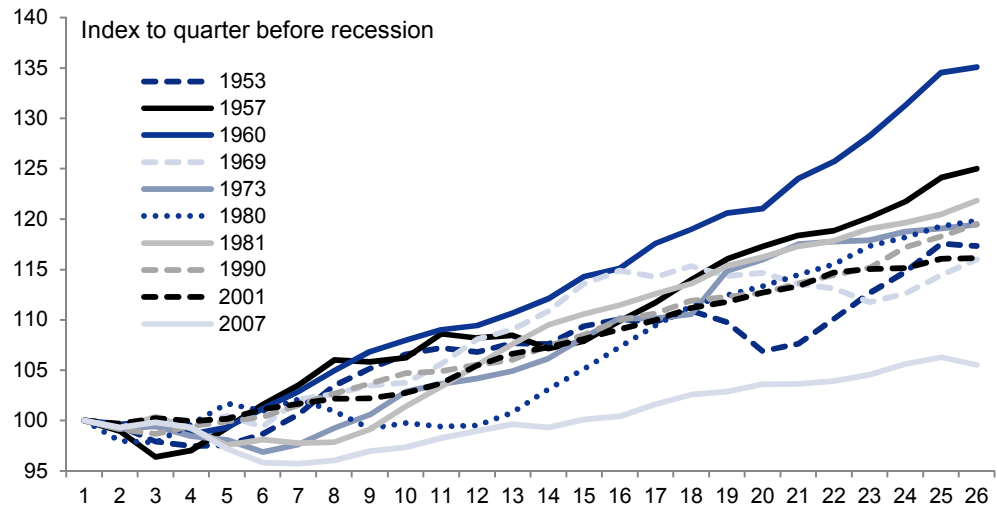
Goldman Sachs does and seeks to do business with companies covered in its research reports. As a result, investors should be aware that the firm may have a conflict of interest that could affect the objectivity of this report. Investors should consider this report as only a single factor in making their investment decision. For Reg AC certification and other important disclosures, see the Disclosure Appendix, or go to www.gs.com/research/hedge.html. Analysts employed by non-US affiliates are not registered/qualified as research analysts with FINRA in the U.S.



The scarcity of growth.

The post recession world has been marked by unusually low growth rates. As Exhibit 1 shows, even in the US (which has been out of recession for five years), growth is tracking below equivalent points in past economic recoveries.

Exhibit 1: US GDP growth continues to track below equivalent points in past recoveries

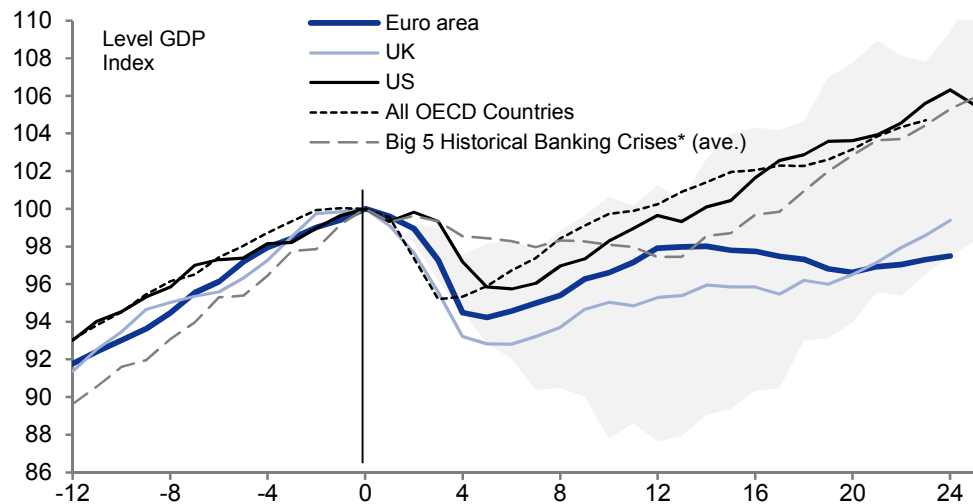


Source: Haver Analytics, Goldman Sachs Global Investment Research.

Of course, part of the reason that the recovery has been slow and growth tepid is that the economic downturn has been exacerbated by the financial crisis. The US housing crash and credit crunch has had a bigger impact on activity than 'normal' recessions, and its impact has been amplified further around the world by the banking and sovereign crisis in Europe. But even in comparison to previous major banking/financial crises (the 'big 5' historically) growth rates have been unusually lacklustre in this cycle, particularly in Europe.

Exhibit 2: Current Euro area recovery subdued relative to other regions and history

*Spain (1977), Norway (1987), Finland (1991), Sweden (1991) and Japan (1992)

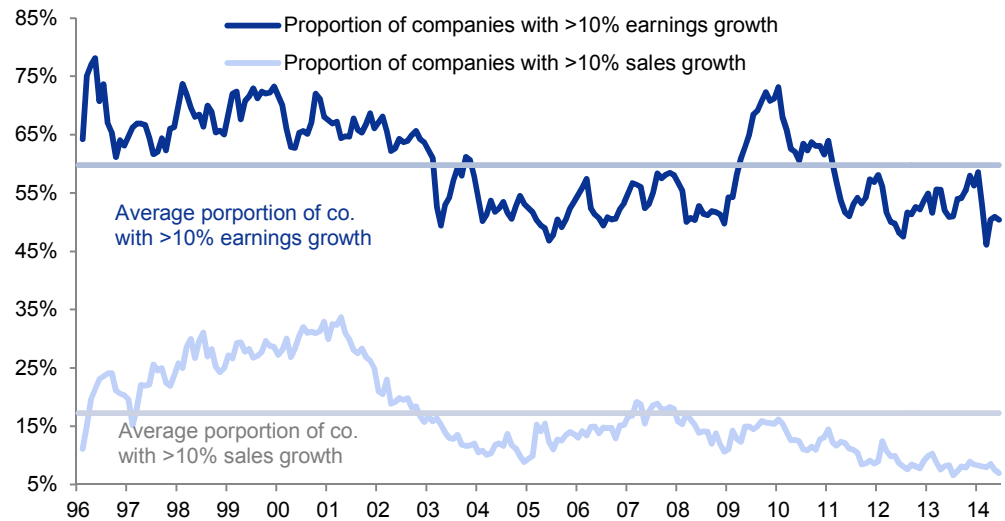


Source: Haver Analytics, Goldman Sachs Global Investment Research

This scarcity of economic growth has taken its toll on the corporate sector too. While the damage has not been done so much in terms of financial losses (at least outside the banking sector) it has had an impact on investment behavior and, with it, confidence in future growth. Rather than spend money on an uncertain macro future, companies have been hoarding cash. **The proportion of companies in Europe, for example, generating annual earnings growth above 10% has fallen sharply, and those generating annual sales growth above 10% have reached a multi-year low. Little wonder that 'growth' has become highly prized.**

Exhibit 3: Proportion of STOXX 600 companies with FY3/FY2 growth >10% has fallen for both sales and earnings

Based on FY3/FY2 consensus earnings and sales growth

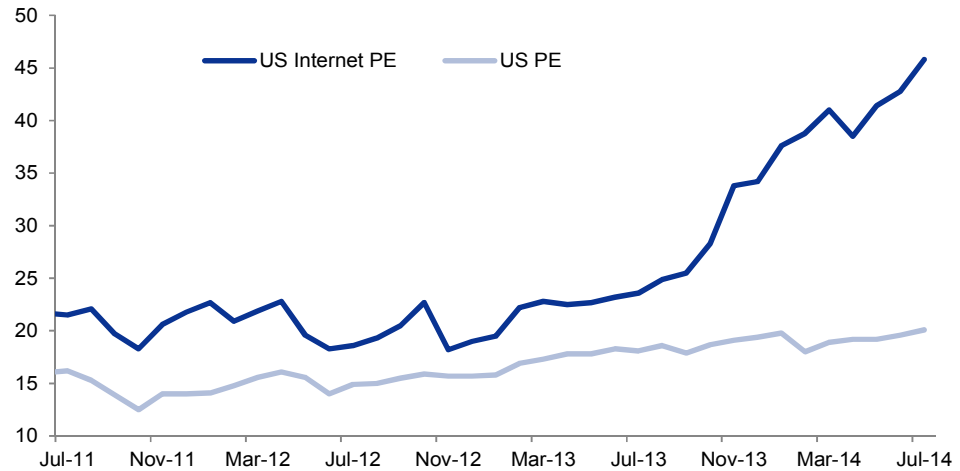


Source: I/B/E/S via Datastream, Goldman Sachs Global Investment Research.

The re-pricing of growth, however, has manifested itself in very specific ways. For a while after the post Lehman recovery, it was the US stock market that embodied many investors' hopes for growth – Europe was entering its own crisis and the lustre had started to fade from EM growth. As a result, US equities went to a high relative multiple premium. Later, when investors began to rediscover Europe (around mid-2012), the European market was largely seen as a deep value investment opportunity with many distressed assets. **The attraction of US growth stocks grew and, in many cases, valuations in areas such as technology have approached levels last seen during the technology bubble of the late 1990s.**



Exhibit 4: US internet trailing P/E and US market trailing P/E



Source: Datastream, Goldman Sachs Global Investment Research.

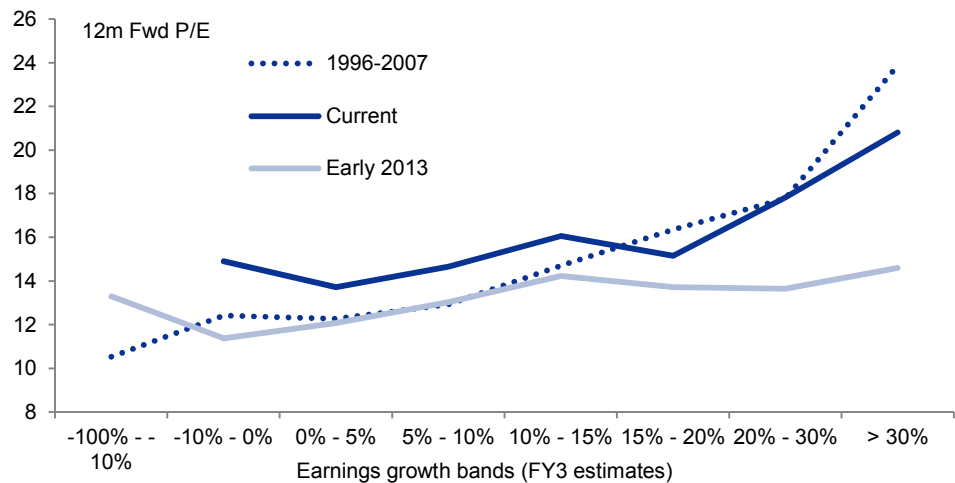
In Europe’s case, the depth of the recession, coupled with an existential crisis of the euro, meant that it has been only since fairly recently that investors would pay any premium for growth again. Investor time horizons shortened during the crisis as uncertainty rose and, as a consequence, only highly visible and predictable top-line growth in very defensive sectors enjoyed much of a premium for a long period (for example consumer staples).

It is only since Mr Draghi’s ‘do whatever it takes’ speech that investors in Europe have started to pay for stronger expected earnings growth again.

Exhibit 5 shows the median P/E multiple on different groups of consensus FY3 earnings estimates. At the start of 2013, when the equity risk premium was very high, this curve was still unusually flat. Investors would not pay a premium for higher medium-term earnings growth as the macro environment remained too uncertain. **As the equity risk premium has fallen, and investors have become more confident and lengthened their investment horizons, the slope of this curve has normalized, suggesting less opportunity to find undervalued growth.**

Exhibit 5: The earnings “growth curve” has steepened as investors are now more confident and are rewarding high EPS growth

Median P/E for stocks in different bands; FY3 consensus earnings growth



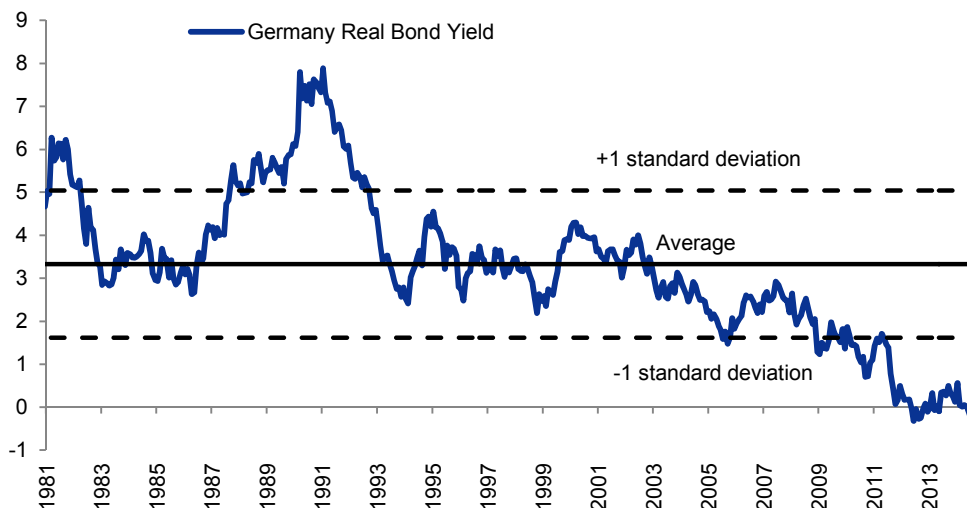
Source: I/B/E/S via Datastream, Goldman Sachs Global Investment Research.

The scarcity of income

While growth may be scarce, income appears even harder to find. In effect, we live in a world with a zero, if not negative, risk free rate. German real bond yields, for example, are close to zero on ten-year maturities.

Even US overnight OIS rates are priced to be negative until 2018, and in the case of the Eurozone this is true through to 2021.

Exhibit 6: The collapsing 'risk free' rate...
 ...now negative in real terms on 10-year maturities



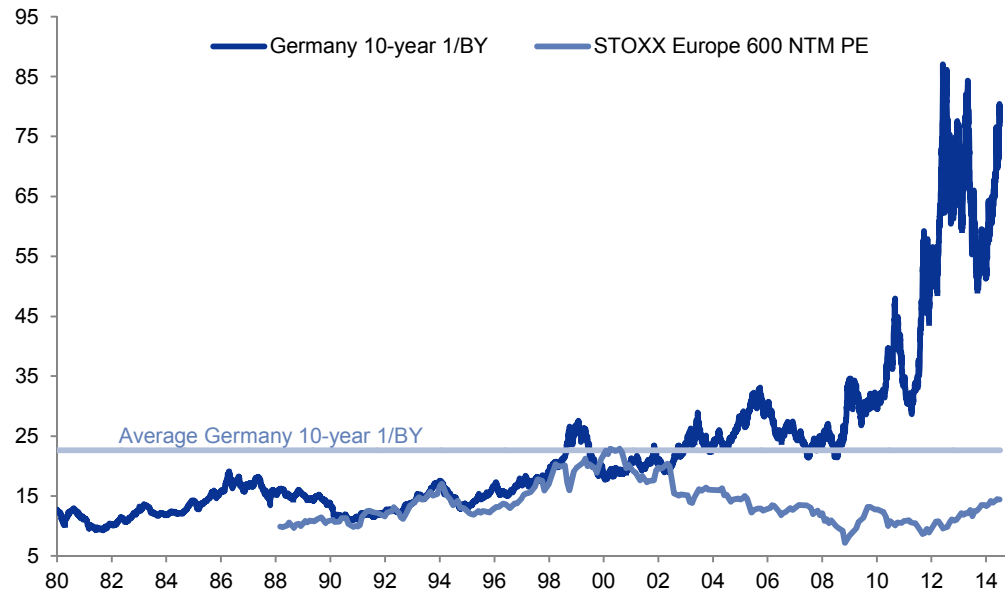
Source: Datastream, Goldman Sachs Global Investment Research.

Yield attracts very high valuations

It is understandable that in a zero-rate world anything offering a higher yield becomes highly prized, particularly when this environment is coupled with low volatility and low inflation expectations. However, **the extent of the rerating is remarkable. An effective multiple for government bonds (1/bond yield for 10-year German government bonds) is in the high 70s.**



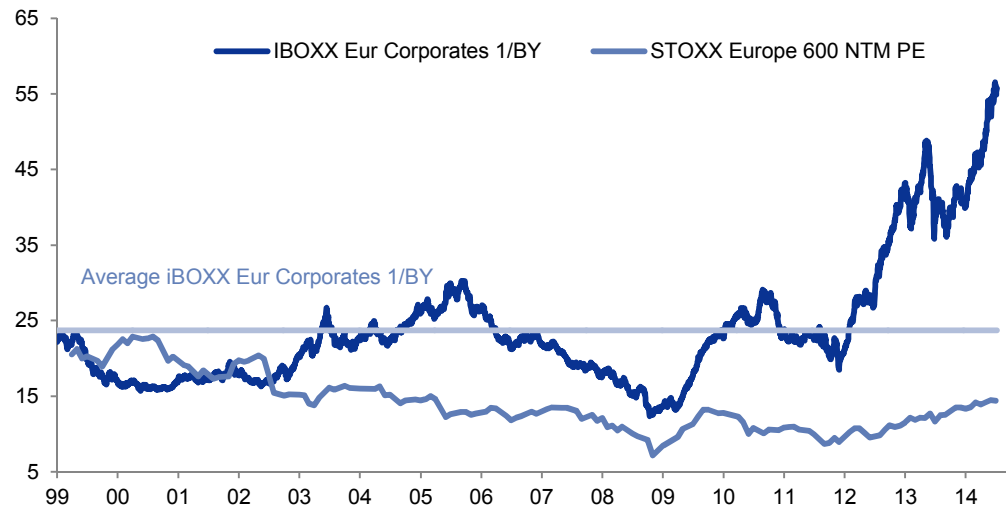
Exhibit 7: The “effective multiple” is extremely high for government bonds...
 1/bond yield for 10-year German bonds and 12-month forward P/E for STOXX 600



Source: Datastream, Goldman Sachs Global Investment Research.

For corporate credit, at close to 60, such a ‘multiple’ is the highest since 1999, the point from when we have data.

Exhibit 8: ...and for corporate credit
 1/bond yield for iBOXX Europe corporates and 12-month forward P/E for STOXX 600



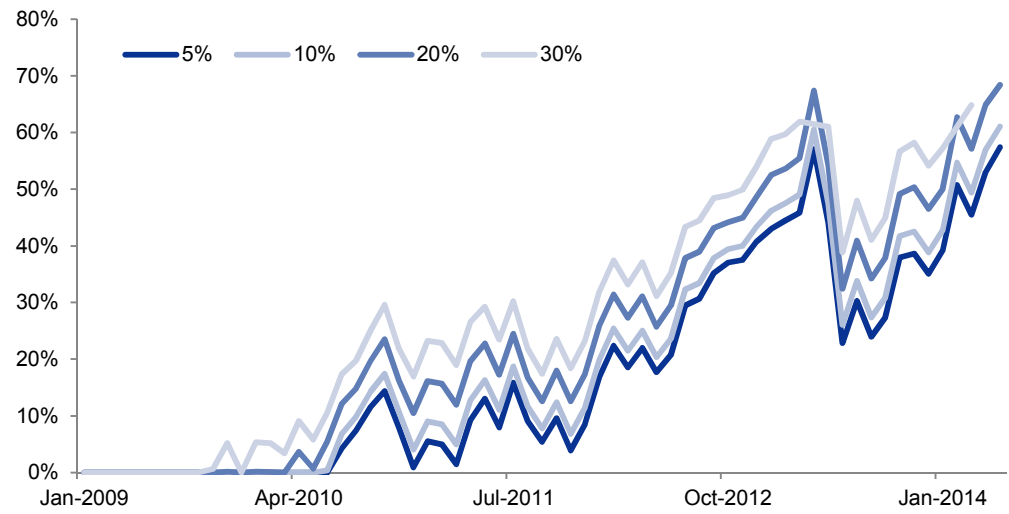
Source: Datastream, Goldman Sachs Global Investment Research.

As bond yields have fallen dramatically and credit spreads narrowed, investors are struggling to meet income requirements without moving significantly up the risk curve. As our Fortnightly Thoughts team note, in order for a credit fund to generate a 4% return, the proportion it would need to invest in BBB would be at a record high.



Exhibit 9: BBB holding needed in credit portfolio

% of portfolio required in high yield corporate bonds to achieve a weighted yield of 4%, if various levels are put in US government bonds



Source: Datastream, Goldman Sachs Global Investment Research.



Finding 'affordable' Growth and Income

The rerating of growth and significant bull market in fixed income raises the question of whether there really is any growth or yield that is still 'affordable'.

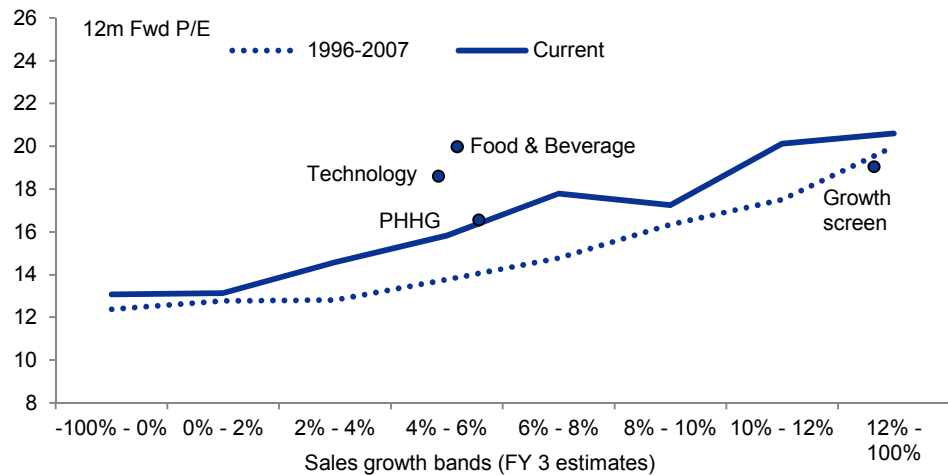
Growth at a reasonable price

Generally 'growth' as a factor is now well rewarded as described earlier. It no longer looks cheap since lower risk premia in equities in general have encouraged investors to lengthen their investment time horizons and to pay more for growth. **Nonetheless, it seems that strong 'theme'-based growth ideas that might generate very strong growth – for example, in areas such as technology as well as in growth areas that are seen as very defensive, such as consumer staples – attract the highest relative valuations compared with history.**

In the case of European equities, we have screened for companies for which our analysts expect top-line growth of over 7% in FY1 and over 8% in both FY2 and FY3.

Exhibit 10: 'Theme'-based growth ideas and defensive growth areas attract the highest relative valuations compared to history, while our growth screen is at reasonable good value for growth compared to the market

Median P/E for stocks and sectors in different bands; FY3 consensus sales growth



Source: I/B/E/S via Datastream, Goldman Sachs Global Investment Research.

Exhibit 11: High sales growth companies (on consensus forecasts) rated Buy by our analysts (some on Conviction List)
 Companies with >5% annual sales growth in FY-1 and FY0, >7% annual sales growth in FY1 and >8% annual sales growth in FY2 and FY3

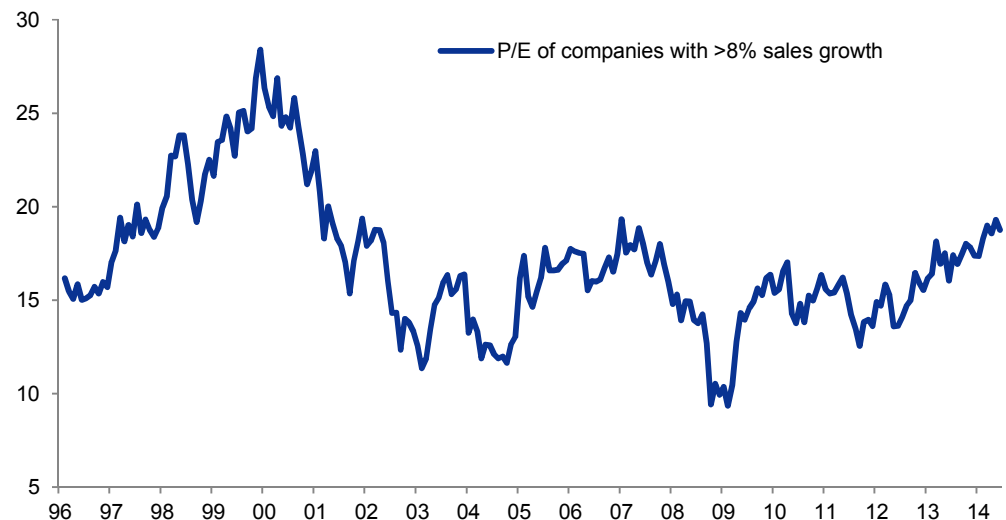
Company name	Sector	Country	Sedol	Price	Currency	Market value (Bil. EUR)	12m forward P/E	Analyst rating	Sales Growth (%)					Earnings Growth (%)				
									FY-1	FY0	FY1	FY2	FY3	FY-1	FY0	FY1	FY2	FY3
Amadeus IT Holding SA	Industrial Goods & Services	Spain	B3MSM28	29.88	€	13.4	19.2	Buy*	7	7	10	11	9	6	11	18	17	15
ARM Holdings plc	Technology	United Kingdom	0059585	8.51	£	15.1	31.5	Buy	17	24	10	12	18	20	41	20	17	30
ASOS plc	Retail	United Kingdom	3092725	28.61	£	3.0	49.1	Buy*	37	39	29	28	30	18	34	NM	62	62
Babcock International	Industrial Goods & Services	United Kingdom	0969703	11.00	£	6.9	15.3	Buy*	14	6	9	27	14	7	23	13	35	26
Barratt Developments	Personal & Household Goods	United Kingdom	0081180	3.67	£	4.5	8.7	Buy	14	12	19	17	17	206	82	106	46	29
Bellway	Personal & Household Goods	United Kingdom	0090498	15.21	£	2.3	8.3	Buy	13	11	33	21	18	55	37	72	28	25
Burberry	Personal & Household Goods	United Kingdom	3174300	14.64	£	8.2	18.4	Buy*	24	8	17	9	13	20	4	24	11	10
Coloplast	Health Care	Denmark	B8FRX8	475.30	DK	12.9	28.8	Buy	8	6	7	9	8	21	24	18	14	14
Essentra Plc	Industrial Goods & Services	United Kingdom	B074435	7.69	£	2.3	16.5	Buy	20	14	13	12	12	34	18	17	16	16
Fresenius SE & Co KGaA	Health Care	Germany	4352097	110.48	€	16.1	16.4	Buy	18	5	12	9	10	22	12	7	21	17
Gemalto	Technology	Netherlands	B9MS8P5	74.71	€	6.6	18.9	Buy	12	7	12	15	15	22	17	30	27	17
Iliad	Technology	France	7759435	209.80	€	12.2	30.1	Buy*	49	19	16	19	13	NM	NM	38	24	28
Novo Nordisk	Health Care	Denmark	BHC8X90	247.80	DK	70.2	22.6	Buy*	18	7	7	12	10	25	18	11	17	14
Ocado Group PLC	Retail	United Kingdom	B3M8574	3.84	£	2.8	99.7	Buy*	11	19	22	27	29	NM	NM	220	6	
Paddy Power	Travel & Leisure	Ireland	4828974	49.25	€	2.4	16.9	Buy	31	14	12	16	13	0	2	18	1	12
Persimmon	Personal & Household Goods	United Kingdom	0682538	12.54	£	4.8	9.9	Buy	12	21	25	22	22	58	55	43	44	34
Prada SpA	Personal & Household Goods	Hong Kong	B4PFFW4	54.45	HK\$	13.2	18.2	Buy	25	29	9	10	13	72	45	0	12	16
Recordati	Health Care	Italy	B07DR25	12.31	€	2.6	15.5	Buy	9	14	11	11	9	2	13	23	11	11
Rightmove Plc	Media	United Kingdom	B2987V8	20.79	£	2.6	20.7	Buy*	17	19	16	16	12	19	22	22	18	14
Salvatore Ferragamo SpA	Personal & Household Goods	Italy	B5V2053	20.51	€	3.5	20.1	Buy	17	9	12	14	12	30	43	22	27	22
Sika	Construction & Materials	Switzerland	4808084	3516.00	SF	6.2	20.3	Buy	6	6	11	12	12	31	22	22	22	19
Sky Deutschland AG	Media	Germany	B066214	6.31	€	5.5	NM	Buy	17	16	15	16	13	31	36	51	188	246
Sports Direct International Plc	Retail	United Kingdom	B1QH8P2	7.02	£	5.3	17.3	Buy	15	19	20	18	10	16	50	32	30	26
Taylor Wimpey	Personal & Household Goods	United Kingdom	0878230	1.13	£	4.6	9.1	Buy*	14	21	21	13	7	47	46	40	26	6
The Swatch Group	Personal & Household Goods	Switzerland	7184725	524.50	SF	13.3	15.3	Buy	8	11	12	12	12	20	2	18	17	16
Whitbread	Travel & Leisure	United Kingdom	B1KJ40	41.95	£	9.6	19.8	Buy	14	13	13	13	13	13	21	15	16	16
Wirecard	Industrial Goods & Services	Germany	7508927	30.03	€	3.7	27.4	Buy*	22	28	31	25	22	13	40	44	33	30
Median						5.5	18.7		15	14	13	14	13	21	23	22	22	17

Share prices as at July 10, 2014; *Conviction List member.
 Source: I/B/E/S via Datastream, Goldman Sachs Global Investment Research.

The median multiple for this list of companies is 18.7x. This may sound expensive, but:

- it is at reasonably good value for its growth compared to the general trade-off between growth and value elsewhere in the market (see Exhibit 10)
- the current valuation of these companies has typically been at around this level in the past and was higher in the 1990s despite higher interest rates at the time. (Exhibit 12).

Exhibit 12: STOXX 600 companies in the 8% plus sales growth category have typically traded at high valuations in the past
 Median 12-month forward P/E for companies with >8% FY3/FY2 consensus sales growth



Source: I/B/E/S via Datastream, Goldman Sachs Global Investment Research.

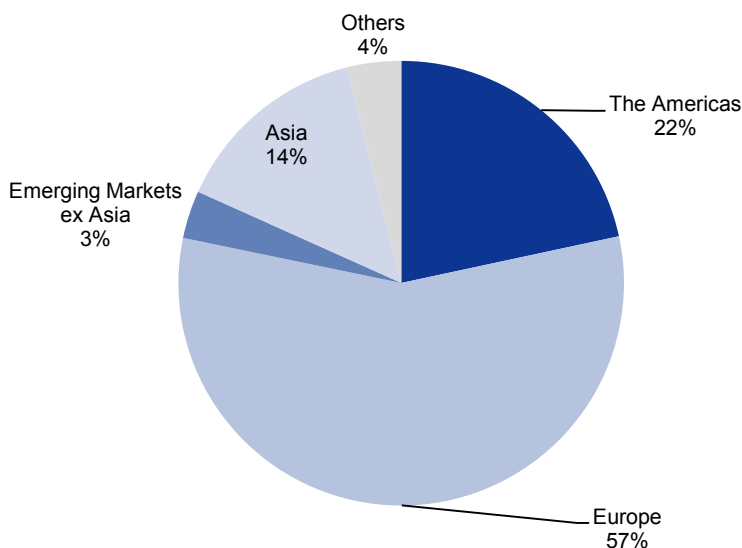
We should also consider that:

- **The current low interest rate/volatility/inflation environment may suggest that ratings in these stocks could be higher; and,**
- **If, as we expect, the cost of equity falls further over the next couple of years as the equity risk premium falls, then longer duration growth stocks may become more valuable still.**

It is also worth noting that the listed stocks have quite high DM exposure (just shy of 80% of sales) which we favour in a period of likely improvement in DM demand.

Exhibit 13: ...and close to 80% exposure to DM markets

Aggregate sales exposure to different regions for our growth screen



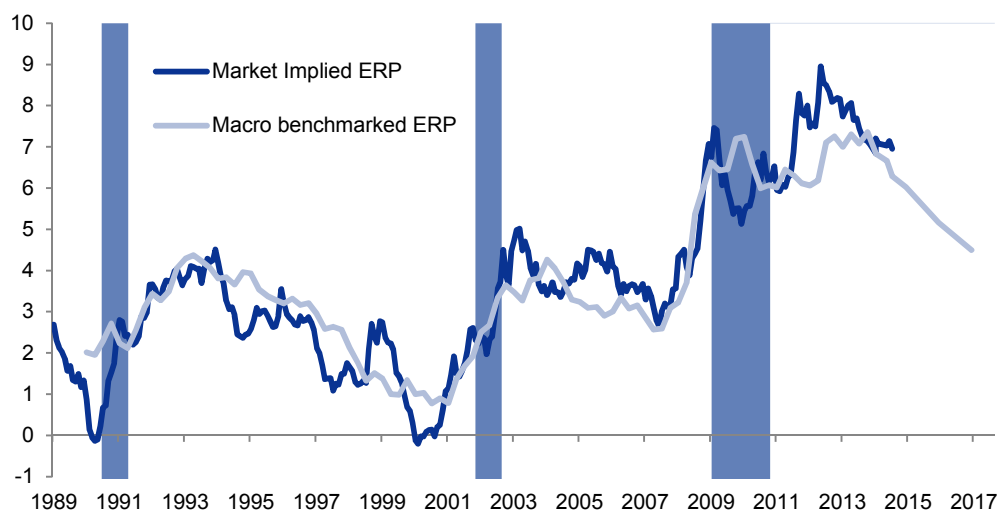
Source: *Worldscope via Datastream, Goldman Sachs Global Investment Research.*



Affordable yield – High dividend yield and growth (GSSTHIDY)

The equity market is the only major asset class in which risk premia remain high. For a long time we have argued that this offers an opportunity for investors. This is particularly true in an environment where the ERP falls and corporates begin to distribute cash more actively. We have already seen a good deal of this in the US and, as we argued in, “*Show me the Money part 2: Returning to Investing?*”, February 27, 2014, we expect more in Europe too. We would not focus only on dividend yield, however. Many stocks with the highest yields could be value traps and vulnerable in an environment where bond yields rose. Our preferred strategy would be to look for a combination of income with growth.

Exhibit 14: Market-implied and macro benchmarked ERP (%)

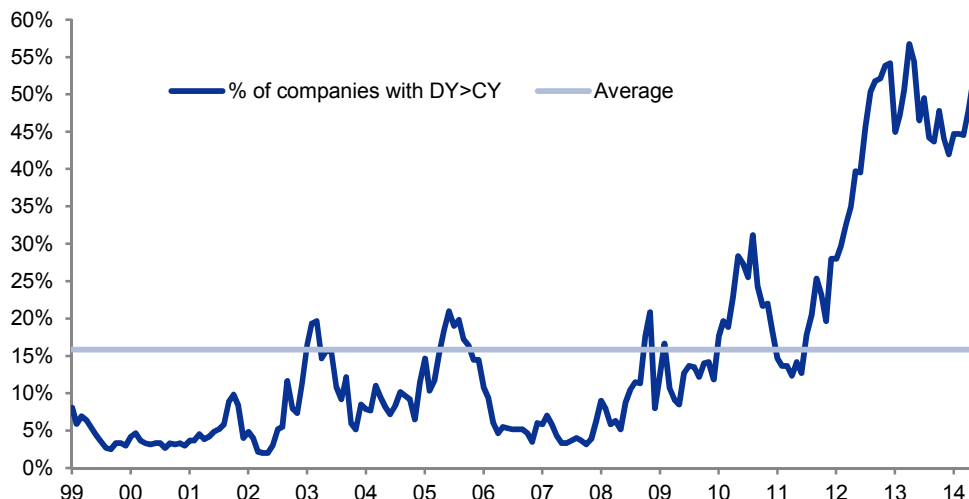


Source: Goldman Sachs Global Investment Research.

In Europe in particular, the risk premium remains historically high and, as our macro model implies, is likely to decline over time. **Certainly this may be offset over time by a modest rise in bond yields, but the resulting cost of equity is still likely to trend downwards, supporting returns and higher valuations for equities.**

Within the asset class, however, there remains a large group of companies that yields far more than corporate credit.

Exhibit 15: Percentage of European companies with div. yields > corp. bond yield



Source: FactSet, Datastream, Goldman Sachs Global Investment Research

We would not focus purely on dividend yield, however. Many stocks with the highest yields are value traps and would be vulnerable in an environment where bond yields moved higher. Our preferred strategy would be to look for a combination of income with growth.

The argument that we have put forward for a long time is that companies with a reasonable dividend yield but good prospects for dividend growth are highly attractive in a world in which carry is in such demand, and even credit instruments trade as rate products. The basket screens for dividend sustainability by looking at high cash flow cover, low leverage, narrow CDS spreads and manageable payout ratios.

Exhibit 16: Our high dividend yield and growth basket (GSSTHIDY) offers better yield and growth

	GSSTHIDY	STOXX Europe 600
Dividend yield (FY1)	4.2%	3.2%
P/E (FY1)	13.4x	15.0x
Dividend growth (FY2/FY1)	10.0%	9.1%
Dividend growth (FY3/FY2)	9.5%	10.0%
Payout ratio (FY1)	57%	39%
Net debt/ EBITDA (FY1)	1.1x	1.6x
FCF cover (FY1)	1.5x	1.5x
5 year CDS	38 bps	68 bps
Beta	1.00	1.00

Source: Bloomberg, I/B/E/S via Datastream, Goldman Sachs Global Investment Research

The constituents of our high dividend yield and growth basket (GSSTHIDY) are shown in Exhibit 17. The basket has outperformed steadily since 2011, but has experienced a setback recently, mainly as a result of the performance of specific banks contained within it. We believe that the valuation of the basket remains attractive, with a 12m forward P/E of 12.4x.

Exhibit 17: Constituents of our high dividend yield and growth basket (GSSTHIDY)

HIGH DIVIDEND YIELD AND GROWTH BASKET (GSSTHIDY)																	
Company name	Weight	Market cap (€bn)	Beta (6 month)	Dividend yield 2014E	Dividend yield 2015E	DPS growth (forecast) 2014E	DPS growth (forecast) 2015E	DPS growth (forecast) 2013-15E	DPS growth (implied) 2014	DPS growth (implied) 2015	Payout ratio 2014E	Payout ratio 2015E	Free cash flow cover 2014E	Free cash flow cover 2015E	Net debt/EBITDA 2014E	Net debt/EBITDA 2015E	5 year CDS
Automobiles & Parts	6.8%																
BMW	2.3%	59.6	1.20	3.2%	3.8%	15.4%	16.7%	34.6%	7.2%	2.6%	32%	35%	1.7x	1.4x	-0.7x	-0.7x	21 bps
CNH Industrial	2.3%	8.9	1.35	2.5%	2.8%	11.0%	10.9%	23.1%			40%	40%	0.7x	1.0x	0.7x	0.8x	97 bps
Daimler AG	2.3%	72.7	1.67	3.4%	4.4%	2.2%	30.4%	33.3%	-1.4%	-3.7%	61%	39%	0.7x	1.8x	-1.6x	-1.0x	20 bps
Banks	11.4%																
Barclays plc	2.3%	42.8	0.97	4.6%	6.6%	49.2%	42.9%	113.2%	19.2%	37.9%	31%	38%					48 bps
BBVA	2.3%	50.3	1.56	5.7%	4.9%	31.8%	-13.1%	14.5%	0.1%	-16.9%	58%	77%					62 bps
BNP Paribas	2.3%	60.2	1.53	3.1%	5.5%	0.0%	76.3%	76.3%	18.4%	24.1%	33%	29%					41 bps
HSBC	2.3%	141.1	0.65	5.2%	5.9%	-0.7%	12.5%	11.8%	6.4%	2.3%	56%	56%					
Nordea	2.3%	41.7	1.02	5.0%	5.8%	27.6%	16.6%	48.8%	33.4%	-10.3%	56%	60%					
Construction & Materials	9.1%																
Bilfinger SE	2.3%	2.9	1.02	4.5%	4.5%	0.0%	0.0%	0.0%	0.0%	3.3%	59%	62%	-0.1x	0.1x	0.7x	0.6x	
Royal Boskalis Westminster N.V.	2.3%	4.8	0.77	3.8%	4.0%	7.1%	6.7%	14.3%	3.2%	4.7%	46%	47%	1.5x	1.8x	1.7x	1.5x	
Tecnicas Reunidas	2.3%	2.4	0.97	3.3%	3.6%	6.0%	7.9%	14.3%			59%	56%	1.6x	2.1x	-3.5x	-3.7x	
Vinci	2.3%	28.7	1.21	3.7%	4.0%	8.3%	7.1%	16.0%	-1.1%	3.6%	51%	49%	2.2x	2.7x	2.9x	2.5x	31 bps
Financial Services	4.5%																
Groupe Bruxelles Lambert	2.3%	12.4	0.65	3.7%	3.8%	5.0%	5.0%	10.3%	-5.7%	0.0%	67%	55%	2.0x	2.3x	2.6x	1.9x	
IG Group Holdings	2.3%	2.6	0.55	4.5%	5.0%	8.8%	11.7%	21.5%	0.0%	9.7%	60%	60%	1.1x	1.6x	-0.7x	-0.8x	
Health Care	6.8%																
GlaxoSmithKline	2.3%	99.4	0.72	5.3%	5.5%	5.1%	4.9%	10.2%	3.3%	1.8%	72%	78%	1.6x	1.8x	1.9x	1.9x	38 bps
Roche	2.3%	187.8	0.97	3.4%	3.9%	17.3%	12.5%	32.0%	6.1%	5.1%	55%	58%	2.0x	1.8x	0.6x	0.5x	
Sanofi	2.3%	101.0	1.11	3.8%	4.0%	4.0%	4.0%	8.2%	2.2%	4.5%	55%	56%	1.6x	1.2x	0.5x	0.7x	17 bps
Industrial Goods & Services	18.2%																
Atlas Copco	2.3%	49.6	1.15	3.3%	3.5%	18.2%	7.7%	27.3%	0.0%	-9.1%	56%	62%	1.5x	1.7x	0.4x	0.6x	
Cobham	2.3%	4.1	0.72	3.5%	3.9%	10.0%	10.0%	21.0%	10.0%	10.1%	45%	52%	1.4x	1.9x	0.9x	0.9x	
D S Smith	2.3%	3.2	1.23	4.1%	4.3%	20.0%	5.1%	26.0%			57%	60%	0.8x	1.2x	2.4x	2.0x	
Deutsche Post	2.3%	31.9	1.57						10.0%	1.3%							32 bps
Rexam	2.3%	4.7	0.72	3.7%	3.9%	0.9%	4.7%	5.6%			49%	52%	1.3x	2.3x	2.7x	2.3x	68 bps
Sandvik	2.3%	12.2	1.10						0.0%	0.0%	61%		0.2x		1.5x		
Schneider Electric	2.3%	36.8	1.44	3.0%	3.4%	7.0%	15.0%	23.0%	-1.1%	0.9%	47%	44%	2.2x	2.2x	1.2x	1.4x	21 bps
Siemens AG	2.3%	79.6	1.26	4.0%	4.3%	19.6%	6.5%	27.3%	0.0%	5.0%	45%	53%	1.9x	1.5x	0.4x	0.7x	20 bps
Insurance	15.9%																
Aegon N.V.	2.3%	12.5	1.23	3.6%	4.0%	5.0%	10.0%	15.5%	2.7%	15.0%	75%	39%					72 bps
Assicurazioni Generali	2.3%	24.3	1.17	3.8%	4.5%	42.9%	16.7%	66.7%	97.5%	37.0%	34%	38%					49 bps
AXA	2.3%	40.0	1.65	5.2%	5.5%	13.0%	6.6%	20.5%	11.8%	1.6%	43%	45%					43 bps
Legal & General Group	2.3%	16.7	0.87	4.8%	5.5%	15.0%	15.0%	32.3%	-0.5%	9.3%	62%	63%					57 bps
RSA Insurance Group	2.3%	4.9	0.44	3.9%	3.8%	704.9%	-2.8%	682.2%	0.0%		NM	35%					66 bps
Sampo	2.3%	20.8	1.01	4.6%	4.7%	3.0%	2.9%	6.1%	0.0%	0.0%	64%	64%					
SCOR	2.3%	4.5	0.78	6.1%	6.5%	15.4%	6.7%	23.1%	-8.3%	18.2%	44%	54%					38 bps
Media	4.5%																
Pearson	2.3%	11.2	0.49	4.5%	4.8%	5.0%	5.0%	10.3%	6.5%	-11.2%	69%	78%	0.6x	1.1x	1.6x	1.5x	34 bps
SES SA	2.3%	11.1	0.32	4.3%	4.7%	10.0%	10.0%	21.0%	10.3%	9.3%	76%	79%	1.8x	1.2x	2.8x	2.9x	64 bps
Oil & Gas	6.8%																
BP plc	2.3%	117.6	0.68	4.6%	4.6%	0.0%	-0.5%	-0.5%	-3.0%	-1.3%	52%	54%	-0.3x	0.9x	0.9x	1.0x	33 bps
ENI	2.3%	70.4	1.10	5.7%	5.7%	1.8%	0.0%	1.8%	-1.8%	-2.3%	90%	92%	-0.5x	0.1x	0.8x	0.8x	27 bps
Royal Dutch Shell plc (A)	2.3%	192.9	0.62	4.6%	4.7%	1.2%	2.5%	3.7%	-0.1%	-2.3%	58%	53%	-0.2x	0.9x	0.8x	0.7x	21 bps
Personal & Household Goods	4.5%																
British American Tobacco	2.3%	84.7	0.63	4.2%	4.4%	4.8%	3.8%	8.8%	-0.1%	6.2%	66%	70%	1.4x	1.3x	1.7x	1.9x	29 bps
Imperial Tobacco	2.3%	32.5	0.40	4.9%	5.4%	10.0%	9.9%	20.9%	10.2%	2.3%	57%	61%	1.5x	1.6x	3.1x	3.0x	31 bps
Retail	2.3%																
Casino	2.3%	10.7	1.05	3.5%	3.8%	5.8%	8.0%	14.2%	5.0%	9.5%	57%	54%	17.6x	8.7x	1.8x	1.7x	40 bps
Technology	2.3%																
Ericsson	2.3%	27.5	0.79	4.2%	4.7%	16.3%	13.6%	32.2%	9.1%	-1.7%	55%	68%	1.3x	2.3x	-1.1x	-1.7x	26 bps
Telecommunications	4.5%																
Swisscom	2.3%	21.9	0.53	4.3%	5.4%	0.0%	27.3%	27.3%	-0.5%	-6.4%	67%	75%	1.5x	1.3x	1.8x	1.7x	
Telenor	2.3%	25.5	0.71	5.7%	6.4%	14.3%	12.5%	28.6%	-16.7%	0.0%	77%	78%	2.5x	1.1x	1.1x	1.3x	40 bps
Utilities	2.3%																
Centrica	2.3%	19.7	0.19	5.7%	5.9%	3.5%	3.5%	7.1%	-2.7%	1.5%	63%	81%	2.3x	0.7x	2.0x	2.3x	62 bps
Median	2.3%	26.5	0.97	4.2%	4.6%	7.7%	7.8%	21.0%	0%	2%	57%	56%	1.5x	1.5x	1.1x	1.1x	38 bps

Source: Bloomberg, Goldman Sachs Global Investment Research.

Equity basket disclosure

The Securities Division of the firm may have been consulted as to the various components of the baskets of securities discussed in this report prior to their launch; however, none of this research, the conclusions expressed herein, nor the timing of this report was shared with the Securities Division.

Note: The ability to trade these baskets will depend upon market conditions, including liquidity and borrow constraints at the time of trade.

Disclosure Appendix

Reg AC

We, Peter Oppenheimer, Christian Mueller-Glissmann, CFA, Anders Nielsen, Sharon Bell, CFA, Matthieu Walterspiler, CFA and Anna Huang, hereby certify that all of the views expressed in this report accurately reflect our personal views about the subject company or companies and its or their securities. We also certify that no part of our compensation was, is or will be, directly or indirectly, related to the specific recommendations or views expressed in this report.

Disclosures

Distribution of ratings/investment banking relationships

Goldman Sachs Investment Research global coverage universe

	Rating Distribution			Investment Banking Relationships		
	Buy	Hold	Sell	Buy	Hold	Sell
Global	32%	54%	14%	42%	36%	30%

As of July 1, 2014, Goldman Sachs Global Investment Research had investment ratings on 3,697 equity securities. Goldman Sachs assigns stocks as Buys and Sells on various regional Investment Lists; stocks not so assigned are deemed Neutral. Such assignments equate to Buy, Hold and Sell for the purposes of the above disclosure required by NASD/NYSE rules. See 'Ratings, Coverage groups and views and related definitions' below.

Disclosures required by United States laws and regulations

See company-specific regulatory disclosures above for any of the following disclosures required as to companies referred to in this report: manager or co-manager in a pending transaction; 1% or other ownership; compensation for certain services; types of client relationships; managed/co-managed public offerings in prior periods; directorships; for equity securities, market making and/or specialist role. Goldman Sachs usually makes a market in fixed income securities of issuers discussed in this report and usually deals as a principal in these securities.

The following are additional required disclosures: **Ownership and material conflicts of interest:** Goldman Sachs policy prohibits its analysts, professionals reporting to analysts and members of their households from owning securities of any company in the analyst's area of coverage. **Analyst compensation:** Analysts are paid in part based on the profitability of Goldman Sachs, which includes investment banking revenues. **Analyst as officer or director:** Goldman Sachs policy prohibits its analysts, persons reporting to analysts or members of their households from serving as an officer, director, advisory board member or employee of any company in the analyst's area of coverage. **Non-U.S. Analysts:** Non-U.S. analysts may not be associated persons of Goldman, Sachs & Co. and therefore may not be subject to NASD Rule 2711/NYSE Rules 472 restrictions on communications with subject company, public appearances and trading securities held by the analysts.

Additional disclosures required under the laws and regulations of jurisdictions other than the United States

The following disclosures are those required by the jurisdiction indicated, except to the extent already made above pursuant to United States laws and regulations. **Australia:** Goldman Sachs Australia Pty Ltd and its affiliates are not authorised deposit-taking institutions (as that term is defined in the Banking Act 1959 (Cth)) in Australia and do not provide banking services, nor carry on a banking business, in Australia. This research, and any access to it, is intended only for "wholesale clients" within the meaning of the Australian Corporations Act, unless otherwise agreed by Goldman Sachs. In producing research reports, members of the Global Investment Research Division of Goldman Sachs Australia may attend site visits and other meetings hosted by the issuers the subject of its research reports. In some instances the costs of such site visits or meetings may be met in part or in whole by the issuers concerned if Goldman Sachs Australia considers it is appropriate and reasonable in the specific circumstances relating to the site visit or meeting. **Brazil:** Disclosure information in relation to CVM Instruction 483 is available at <http://www.gs.com/worldwide/brazil/area/gir/index.html>. Where applicable, the Brazil-registered analyst primarily responsible for the content of this research report, as defined in Article 16 of CVM Instruction 483, is the first author named at the beginning of this report, unless indicated otherwise at the end of the text. **Canada:** Goldman Sachs Canada Inc. is an affiliate of The Goldman Sachs Group Inc. and therefore is included in the company specific disclosures relating to Goldman Sachs (as defined above). Goldman Sachs Canada Inc. has approved of, and agreed to take responsibility for, this research report in Canada if and to the extent that Goldman Sachs Canada Inc. disseminates this research report to its clients. **Hong Kong:** Further information on the securities of covered companies referred to in this research may be obtained on request from Goldman Sachs (Asia) L.L.C. **India:** Further information on the subject company or companies referred to in this research may be obtained from Goldman Sachs (India) Securities Private Limited. **Japan:** See below. **Korea:** Further information on the subject company or companies referred to in this research may be obtained from Goldman Sachs (Asia) L.L.C., Seoul Branch. **New Zealand:** Goldman Sachs New Zealand Limited and its affiliates are neither "registered banks" nor "deposit takers" (as defined in the Reserve Bank of New Zealand Act 1989) in New Zealand. This research, and any access to it, is intended for "wholesale clients" (as defined in the Financial Advisers Act 2008) unless otherwise agreed by Goldman Sachs. **Russia:** Research reports distributed in the Russian Federation are not advertising as defined in the Russian legislation, but are information and analysis not having product promotion as their main purpose and do not provide appraisal within the meaning of the Russian legislation on appraisal activity. **Singapore:** Further information on the covered companies referred to in this research may be obtained from Goldman Sachs (Singapore) Pte. (Company Number: 198602165W). **Taiwan:** This material is for reference only and must not be reprinted without permission. Investors should carefully consider their own investment risk. Investment results are the responsibility of the individual investor. **United Kingdom:** Persons who would be categorized as retail clients in the United Kingdom, as such term is defined in the rules of the Financial Conduct Authority, should read this research in conjunction with prior Goldman Sachs research on the covered companies referred to herein and should refer to the risk warnings that have been sent to them by Goldman Sachs International. A copy of these risks warnings, and a glossary of certain financial terms used in this report, are available from Goldman Sachs International on request.

European Union: Disclosure information in relation to Article 4 (1) (d) and Article 6 (2) of the European Commission Directive 2003/126/EC is available at <http://www.gs.com/disclosures/europeanpolicy.html> which states the European Policy for Managing Conflicts of Interest in Connection with Investment Research.

Japan: Goldman Sachs Japan Co., Ltd. is a Financial Instrument Dealer registered with the Kanto Financial Bureau under registration number Kinsho 69, and a member of Japan Securities Dealers Association, Financial Futures Association of Japan and Type II Financial Instruments Firms Association. Sales and purchase of equities are subject to commission pre-determined with clients plus consumption tax. See company-specific disclosures as to any applicable disclosures required by Japanese stock exchanges, the Japanese Securities Dealers Association or the Japanese Securities Finance Company.

Ratings, coverage groups and views and related definitions

Buy (B), Neutral (N), Sell (S) -Analysts recommend stocks as Buys or Sells for inclusion on various regional Investment Lists. Being assigned a Buy or Sell on an Investment List is determined by a stock's return potential relative to its coverage group as described below. Any stock not assigned as a Buy or a Sell on an Investment List is deemed Neutral. Each regional Investment Review Committee manages various regional Investment Lists to a global guideline of 25%-35% of stocks as Buy and 10%-15% of stocks as Sell; however, the distribution of Buys and Sells in any particular coverage group may vary as determined by the regional Investment Review Committee. Regional Conviction Buy and Sell lists represent investment recommendations focused on either the size of the potential return or the likelihood of the realization of the return.

Return potential represents the price differential between the current share price and the price target expected during the time horizon associated with the price target. Price targets are required for all covered stocks. The return potential, price target and associated time horizon are stated in each report adding or reiterating an Investment List membership.

Coverage groups and views: A list of all stocks in each coverage group is available by primary analyst, stock and coverage group at <http://www.gs.com/research/hedge.html>. The analyst assigns one of the following coverage views which represents the analyst's investment outlook on the coverage group relative to the group's historical fundamentals and/or valuation. **Attractive (A).** The investment outlook over the following 12 months is favorable relative to the coverage group's historical fundamentals and/or valuation. **Neutral (N).** The investment outlook over the following 12 months is neutral relative to the coverage group's historical fundamentals and/or valuation. **Cautious (C).** The investment outlook over the following 12 months is unfavorable relative to the coverage group's historical fundamentals and/or valuation.

Not Rated (NR). The investment rating and target price have been removed pursuant to Goldman Sachs policy when Goldman Sachs is acting in an advisory capacity in a merger or strategic transaction involving this company and in certain other circumstances. **Rating Suspended (RS).** Goldman Sachs Research has suspended the investment rating and price target for this stock, because there is not a sufficient fundamental basis for determining, or there are legal, regulatory or policy constraints around publishing, an investment rating or target. The previous investment rating and price target, if any, are no longer in effect for this stock and should not be relied upon. **Coverage Suspended (CS).** Goldman Sachs has suspended coverage of this company. **Not Covered (NC).** Goldman Sachs does not cover this company. **Not Available or Not Applicable (NA).** The information is not available for display or is not applicable. **Not Meaningful (NM).** The information is not meaningful and is therefore excluded.

Global product; distributing entities

The Global Investment Research Division of Goldman Sachs produces and distributes research products for clients of Goldman Sachs on a global basis. Analysts based in Goldman Sachs offices around the world produce equity research on industries and companies, and research on macroeconomics, currencies, commodities and portfolio strategy. This research is disseminated in Australia by Goldman Sachs Australia Pty Ltd (ABN 21 006 797 897); in Brazil by Goldman Sachs do Brasil Corretora de Títulos e Valores Mobiliários S.A.; in Canada by either Goldman Sachs Canada Inc. or Goldman, Sachs & Co.; in Hong Kong by Goldman Sachs (Asia) L.L.C.; in India by Goldman Sachs (India) Securities Private Ltd.; in Japan by Goldman Sachs Japan Co., Ltd.; in the Republic of Korea by Goldman Sachs (Asia) L.L.C., Seoul Branch; in New Zealand by Goldman Sachs New Zealand Limited; in Russia by OOO Goldman Sachs; in Singapore by Goldman Sachs (Singapore) Pte. (Company Number: 198602165W); and in the United States of America by Goldman, Sachs & Co. Goldman Sachs International has approved this research in connection with its distribution in the United Kingdom and European Union.

European Union: Goldman Sachs International authorised by the Prudential Regulation Authority and regulated by the Financial Conduct Authority and the Prudential Regulation Authority, has approved this research in connection with its distribution in the European Union and United Kingdom; Goldman Sachs AG and Goldman Sachs International Zweigniederlassung Frankfurt, regulated by the Bundesanstalt für Finanzdienstleistungsaufsicht, may also distribute research in Germany.

General disclosures

This research is for our clients only. Other than disclosures relating to Goldman Sachs, this research is based on current public information that we consider reliable, but we do not represent it is accurate or complete, and it should not be relied on as such. We seek to update our research as appropriate, but various regulations may prevent us from doing so. Other than certain industry reports published on a periodic basis, the large majority of reports are published at irregular intervals as appropriate in the analyst's judgment.

Goldman Sachs conducts a global full-service, integrated investment banking, investment management, and brokerage business. We have investment banking and other business relationships with a substantial percentage of the companies covered by our Global Investment Research Division. Goldman, Sachs & Co., the United States broker dealer, is a member of SIPC (<http://www.sipc.org>).

Our salespeople, traders, and other professionals may provide oral or written market commentary or trading strategies to our clients and our proprietary trading desks that reflect opinions that are contrary to the opinions expressed in this research. Our asset management area, our proprietary trading desks and investing businesses may make investment decisions that are inconsistent with the recommendations or views expressed in this research.

The analysts named in this report may have from time to time discussed with our clients, including Goldman Sachs salespersons and traders, or may discuss in this report, trading strategies that reference catalysts or events that may have a near-term impact on the market price of the equity securities discussed in this report, which impact may be directionally counter to the analyst's published price target expectations for such stocks. Any such trading strategies are distinct from and do not affect the analyst's fundamental equity rating for such stocks, which rating reflects a stock's return potential relative to its coverage group as described herein.

We and our affiliates, officers, directors, and employees, excluding equity and credit analysts, will from time to time have long or short positions in, act as principal in, and buy or sell, the securities or derivatives, if any, referred to in this research.

This research is not an offer to sell or the solicitation of an offer to buy any security in any jurisdiction where such an offer or solicitation would be illegal. It does not constitute a personal recommendation or take into account the particular investment objectives, financial situations, or needs of individual clients. Clients should consider whether any advice or recommendation in this research is suitable for their particular circumstances and, if appropriate, seek professional advice, including tax advice. The price and value of investments referred to in this research and the income from them may fluctuate. Past performance is not a guide to future performance, future returns are not guaranteed, and a loss of original capital may occur. Fluctuations in exchange rates could have adverse effects on the value or price of, or income derived from, certain investments.

Certain transactions, including those involving futures, options, and other derivatives, give rise to substantial risk and are not suitable for all investors. Investors should review current options disclosure documents which are available from Goldman Sachs sales representatives or at <http://www.theocc.com/about/publications/character-risks.jsp>. Transaction costs may be significant in option strategies calling for multiple purchase and sales of options such as spreads. Supporting documentation will be supplied upon request.

All research reports are disseminated and available to all clients simultaneously through electronic publication to our internal client websites. Not all research content is redistributed to our clients or available to third-party aggregators, nor is Goldman Sachs responsible for the redistribution of our research by third party aggregators. For research, models or other data available on a particular security, please contact your sales representative or go to <http://360.gs.com>.

Disclosure information is also available at <http://www.gs.com/research/hedge.html> or from Research Compliance, 200 West Street, New York, NY 10282.

© 2014 Goldman Sachs.

No part of this material may be (i) copied, photocopied or duplicated in any form by any means or (ii) redistributed without the prior written consent of The Goldman Sachs Group, Inc.

